



BT	BHUTAN
----	--------

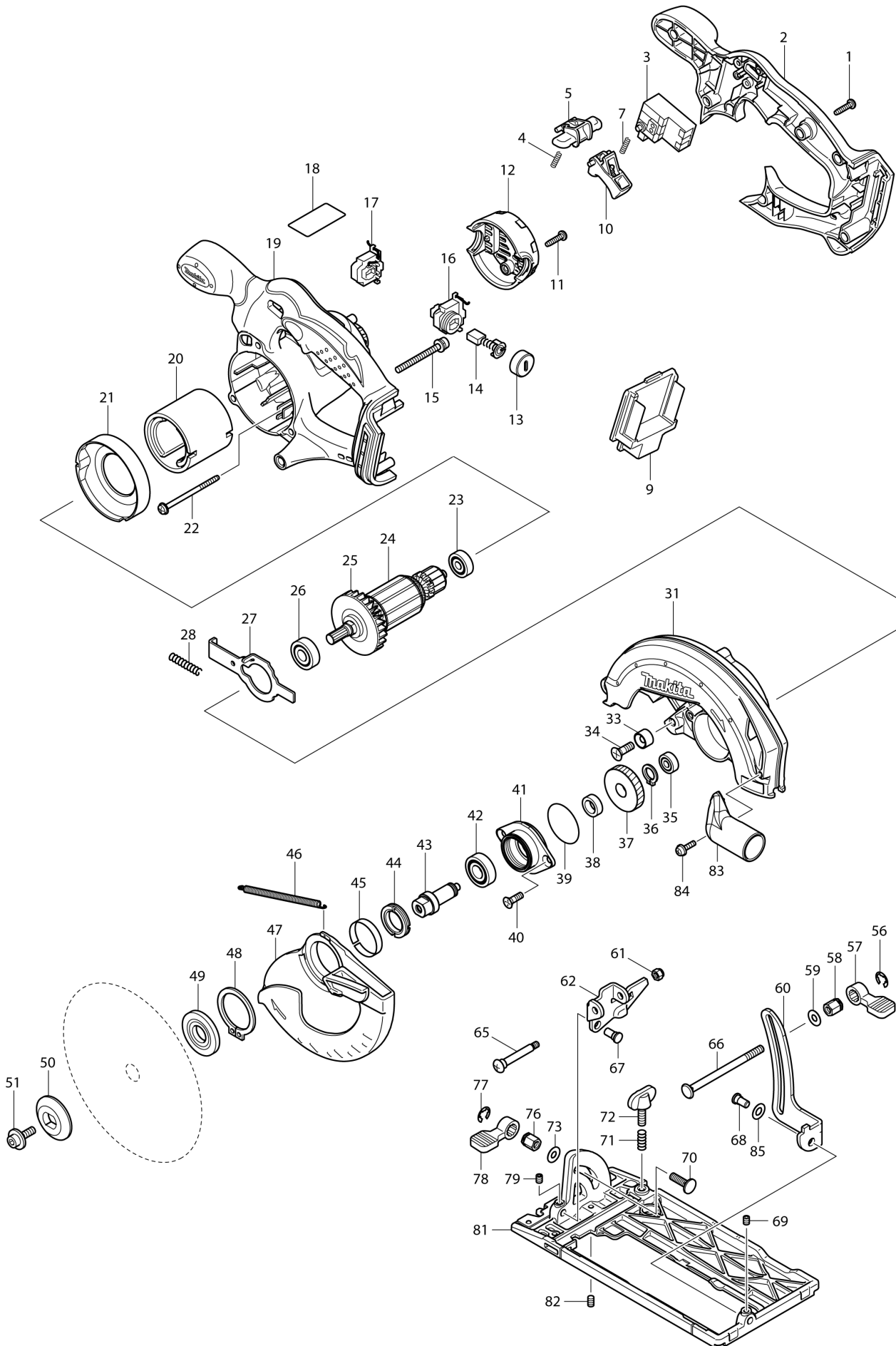
Diagram / Parts List

DSS611

CORDLESS CIRCULAR SAW 165MM



(BT) DSS611 / CORDLESS CIRCULAR SAW 165MM



BT

BHUTAN

DSS611 / CORDLESS CIRCULAR SAW 165MM

Item	Sub	Parts No.	Parts Description	Qty	I/C	E/C No.	Close No.	Remark
001		265995-6	TAPPING SCREW 4X18	5			DE421	
001-1		266326-2	TAPPING SCREW 4X18	5	O	DE421		
002		141472-1	HANDLE COVER COMPLETE	1				
003		651976-0	SWITCH TG73BD	1				
004		231469-9	COMPRESSION SPRING 4	1				
005		419664-3	LOCK OFF LEVER	1				
007		231469-9	COMPRESSION SPRING 4	1				
009		644808-8	TERMINAL	1				
010		419665-1	SWITCH LEVER	1				
011		265995-6	TAPPING SCREW 4X18	2			DE421	
011-1		266326-2	TAPPING SCREW 4X18	2	O	DE421		
012		419281-9	REAR COVER	1				
013		643829-7	HOLDER CAP	2				
014		194435-6	CARBON BRUSH CB-441	1				
015		911263-2	PAN HEAD SCREW M5X40	3				
016		643897-0	BRUSH HOLDER	1				
017		643898-8	BRUSH HOLDER	1				
018		815L51-0	DSS611 NAME PLATE	1				
019		141473-9	MOTOR HOUSING COMPLETE	1				
020		638571-3	YOKE UNIT	1			B5317	
020-1		632H52-7	YOKE UNIT	1	<	B5317	D4076	
020-2		638571-3	YOKE UNIT	1	O	D4076		
021		419285-1	BAFFLE PLATE	1				
022		266292-3	TAPPING SCREW 4X65	2				
023		210045-2	BALL BEARING 627DDW	1				
024		510095-0	ARMATURE ASS'Y 18V	1				
	D10		INC. 23,25,26					
025		241869-5	FAN 55	1				
026		211061-7	BALL BEARING 6000LLB	1			DF571	
026-1		210192-9	BALL BEARING 6000LLB	1	O	DF571		
027		346059-6	SHAFT LOCK	1				
028		233092-6	COMPRESSION SPRING 5	1				
031		158603-5	BLADE CASE COMPLETE	1				
	C10	213434-0	O RING 26	1				
033		262049-0	RUBBER RING 6	1				
034		251368-9	+ COUNTERSUNK SCREW M6	1			C3186	
034-1		265694-0	+ COUNTERSUNK HEAD SCREW M6	1	O	C3186		
035		210028-2	BALL BEARING 606ZZ	1				
036		961052-5	RETAINING RING (EXT) S-12	1				
037		227156-6	SPUR GEAR 52	1				
038		257173-2	RING 12	1				
039		213512-6	O RING 39	1				
040		265034-2	+ COUNTERSUNK HEAD SCREW M5X1	2				
041		318009-1	BEARING BOX	1				
042		210109-2	BALL BEARING 6001DDW	1			B4446	
042-1		210163-6	BALL BEARING 6001DDW	1	O	B4446		
043		324626-7	SPINDLE	1			DD522	
043-1		327A37-1	SPINDLE	1	<	DD522		
044		285845-9	BEARING RETAINER 19-29	1				
045		345469-4	THICKNESS RING	1				
046		231821-1	TENSION SPRING 3	1				
047		419286-9	SAFETY COVER	1				
048		961152-1	RETAINING RING (EXT) S-34	1				
049C		224412-5	INNER FLANGE 35	1			A5210	
049D		224412-5	INNER FLANGE 35	1			A5210	
049-1C		224473-5	INNER FLANGE 35	1	O	A5210	B7950	
049-1D		224473-5	INNER FLANGE 35	1	O	A5210	B7950	
049-1E		224473-5	INNER FLANGE 35	1			B7950	
049-2		224593-5	INNER FLANGE 35	1	<	B7950		
050		224409-4	OUTER FLANGE 35	1				
051		266133-3	HEX. SOCKET HEAD BOLT M6X20	1				
056		961014-3	STOP RING E-8	1				
057		272229-0	LEVER 40	1				
058		252158-3	HEX.NUT M6	1				
059		941151-9	FLAT WASHER 6	1				

C:DSS611Z(N)
D:DSS611RFE(H)
E:DSS611RFE3(H)

Interchange

O : Yes

X : No

< : the new part can be substituted for the current.

> : the current part can be substituted for the new.

S : Interchangeable as a set.

